

LITTLE FALLS BROADSIDES FOR WATER

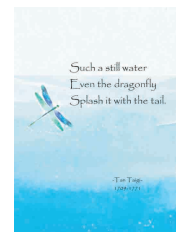
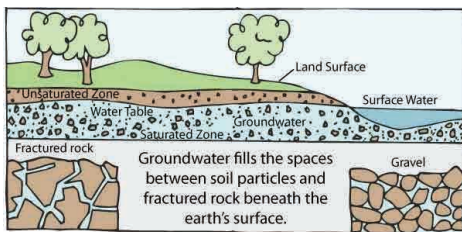
NATIVE PLANTS ARE USED TO ADD COLOR AND TEXTURE TO THE BASE PAPER



common knapweed (*centaurea nigra*), milk thistle (*sonchus asteraceae*), cattail (*typha typaceae*), and primrose (*oenothera clelandii*)

Vegetation plays many roles in riparian buffers. It can reduce flow velocity, filter runoff, increase infiltration, uptake nutrients, stabilize soil, and add organic matter to the soil. The deep roots of prairie plants have been shown to increase infiltration rates even in clay soils, while their high stem density and thatch helps slow water and improves filtering. Woody plants also slow the flow of water, increasing infiltration, creating microhabitats and anchoring slopes. (from the Minnesota Board of Water and Soil Resources)

ADDITIONAL ELEMENTS FROM LOCAL CONTRIBUTORS



ground water (collected from Little Falls Water Plant) and Soil (from local farmers or land owners), visual and written artwork submitted by residents

The physical construction of the paper will incorporate several local elements (ground water, soil, and native plant petals) making it truly unique to Little Falls. Several events will be hosted to construct the paper for this project as well as provide opportunity to discuss and educate on local water issues and the need to protect source water.

Additional events will be hosted to create and celebrate original works related to ground water, source water, and native plants. These elements will be digitally recorded and reproduced on thin paper to be layered later for the original broadsides.

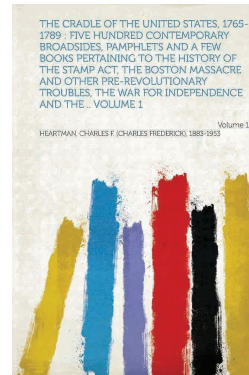
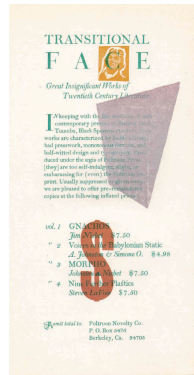
EVENT OPTIONS FOR PARTICIPATING ORGANIZATIONS/AGENCIES

1. PAPER MAKING WORKSHOP- Community members are invited into your space to work with Su to create sheets of paper that incorporate collected elements like wildflowers or seeds. Guests will get to return later to collect their dried creations. This is especially fun for smaller children and can teach them about ways water is used that often go unseen.
2. STORY-TELLING- While this event has the singular purpose of collecting literary information that can be used on the broadsides, the actual event could come in many forms. Story-telling (open mic or curated), pot luck style conversations, or poetry and creative writing readings techniques can all be used.
3. ILLUSTRATIONS- Similar to story-telling events, illustration events involve the collection of visuals that can be used for the broadsides. Hosts invite guests into their space to work from collected elements like wildflowers or photographs, or guests could be invited to work in the environment. All creations will be digitally recorded and guests can take their work home with them.

**** All materials for paper-making events will be provided by Su. Additional materials for illustration events will be provided but guests are encouraged to bring their own, preferred tools and materials. All creations will be recorded but not necessarily included in the final broadside collection. ANY CREATIVE WHOSE WORK IS USED IN THE BROADSIDE WILL BE RECOGNIZED AS A CREATOR OF THE FINAL PIECE.**

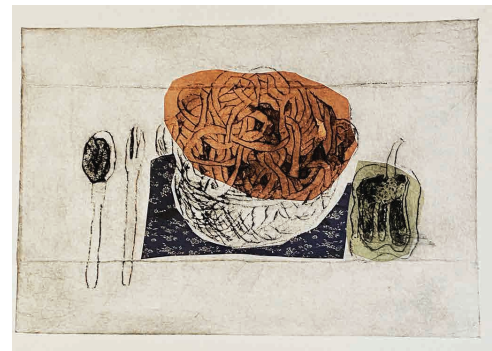
DIGITAL BROADSIDES + CHINE COLLÉ

WHAT IS A BROADSIDE?



A broadside is a large sheet of paper printed on one side only. Historically in Europe, broadsides were used as posters, announcing events or proclamations, giving political views, commentary in the form of ballads, or simply advertisements. Today, broadsides are a popular style of fine art printmaking.

WHAT IS CHINE COLLÉ?



Chine collé is a printmaking technique that layers thin sheets of paper on top of a heavier support paper. Usually, the thin sheets of paper have imagery or text printed on them before they are layered.

HOW WILL THIS PROJECT CREATE CHINÉ COLLE BROADSIDES?

Step 1: Paper Making- This will create the heavier support paper. (The thin paper for chine colle will be purchased.)

Step 2: Artwork Collection- This will be the content that is digitally printed on the thinner paper and layered onto the heavier support paper.

Step 3: Completion- Layering of designs and adhering them together.

Step 4: Celebration and Distribution- These works will be exhibited and shared in a variety of ways throughout Little Falls.

**** These steps are not sequential and each events can happen at any time!**